

Recombinant Phospho-4E-BP1 (Thr37, 46) Monoclonal Antibody

catalog number: AN300049L

Note: Centrifuge before opening to ensure complete recovery of vial contents.

Description

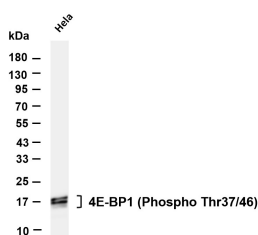
Reactivity	Human;Mouse;Rat
Immunogen	A synthetic peptide corresponding to residues around (Thr37, 46) of Human Phospho-4E-BP1
Host	Rabbit
Isotype	IgG
Clone	A1159
Purification	Protein A
Buffer	10 mM sodium HEPES, 150 mM NaCl, 100 µg/mL protein protectant, 50% glycerol, pH 7.5

Applications

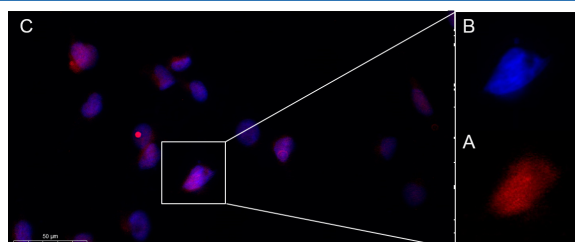
Recommended Dilution

WB	1:2000-1:10000
IF	1:200-1:1000
ELISA	1:5000-1:20000

Data



Various whole cell lysates were separated by 4-20% SDS-PAGE, and the membrane was blotted with anti-4E-BP1 (Phospho Thr37/46) antibody. The HRP-conjugated Goat anti-Rabbit IgG (H + L) antibody was used to detect the antibody. Lane 1: HeLa serum was starved overnight and treated with insulin (100nM) for 5 minutes. Predicted band size: 13kDa. Observed band size: 15-20kDa.



Immunofluorescence analysis of HeLa. Picture A: 4E-BP1 (Phospho 4E-BP1 (Phospho Thr37/46)) Rabbit mAb (red). Picture B: DAPI (blue). Picture C: Merge of A+B.

Preparation & Storage

Storage	Store at -20°C. Valid for 12 months. Avoid freeze / thaw cycles.
Shipping	Ice bag

Background

This gene encodes one member of a family of translation repressor proteins. The protein directly interacts with eukaryotic translation initiation factor 4E (eIF4E), which is a limiting component of the multisubunit complex that recruits 40S ribosomal subunits to the 5' end of mRNAs. Interaction of this protein with eIF4E inhibits complex assembly and represses translation. This protein is phosphorylated in response to various signals including UV irradiation and insulin signaling, resulting in its dissociation from eIF4E and activation of mRNA translation. [provided by RefSeq, Jul 2008]

For Research Use Only

Toll-free: 1-888-852-8623
Web: www.elabscience.com

Tel: 1-832-243-6086
Email: techsupport@elabscience.com

Fax: 1-832-243-6017

Rev. V1.4